

Dawson Butte Ranch Open Space Trail



Trail Uses

This property is open from 1 hour before sunrise to 1 hour after sunset

- Hiking
- Horseback Riding
- Mountain Biking
- Pets On Leash
- Cross Country Skiing
- Snowshoeing
- No Motorized Vehicles

General Information

The Dawson Butte Trail winds 5 miles through gently rolling terrain. The area is mostly forested areas with some open meadow and views of the Front Range mountains. Optional bridle paths include over 60 horse jumps.

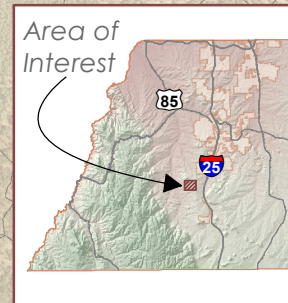
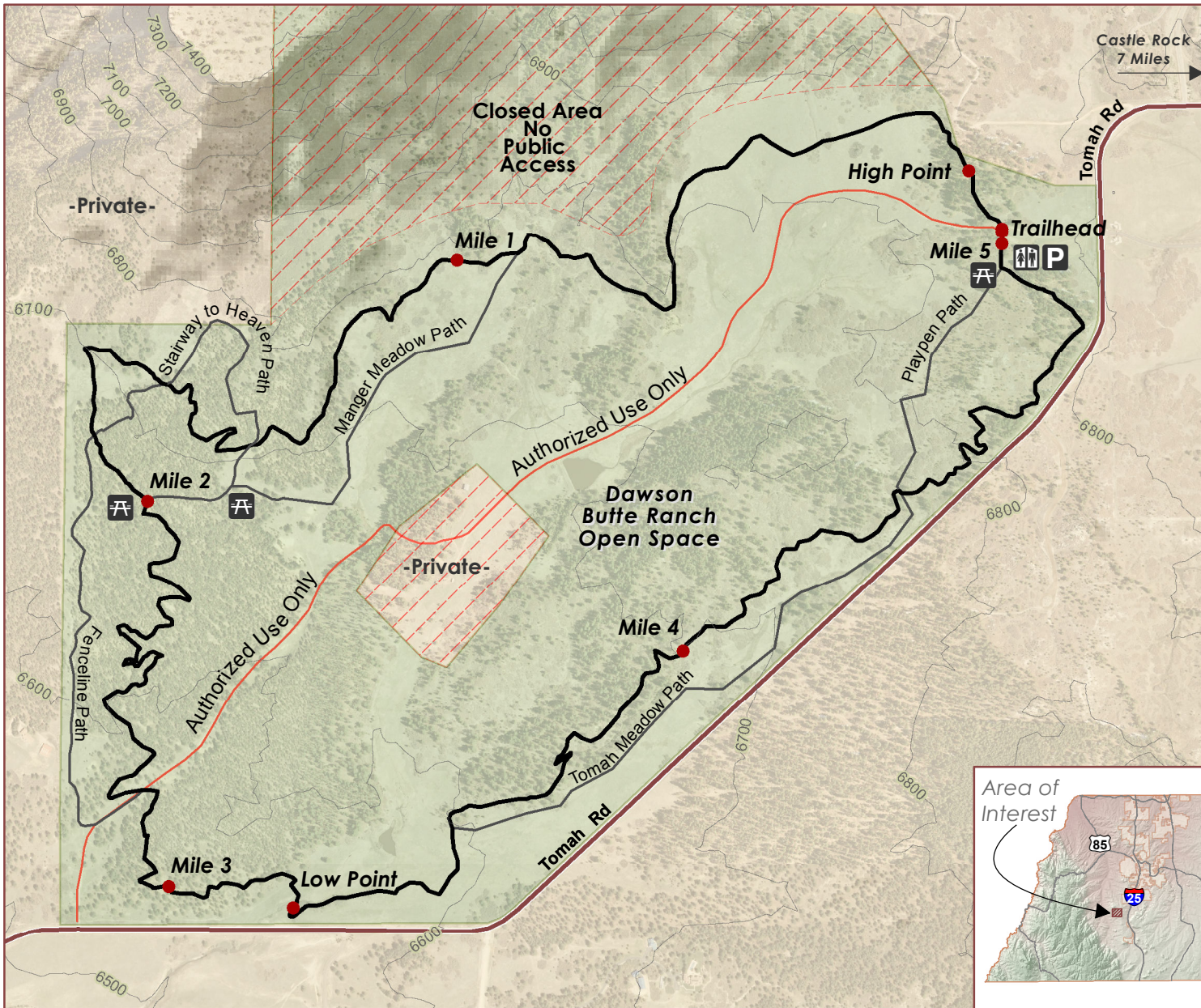
Respect Wildlife

Elk, bears, mountain lions, and many other wildlife species call this land home.

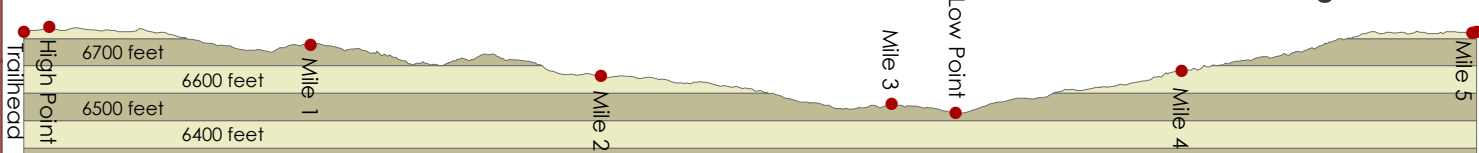
Directions

1753 Tomah Road, Castle Rock
 From I-25, take the Plum Creek Exit west and head south five miles on the frontage road; go right/west at Tomah Rd. 1.5 miles to the Dawson Butte Ranch entrance on the right.

- Dawson Butte Ranch Boundary
- Private Property
- Closed Area
- Dawson Butte Ranch Trail
- Bridle Paths
- 100 Foot Contour
- Roads
- Private Road
- Profile Points



Dawson Butte Ranch Trail - Profile



Trail Length = 5 Miles

