

VOTER SERVICE AND POLLING CENTER (VSPC) AND BALLOT DROP BOX LOCATIONS

2024 GENERAL ELECTION

Douglas County, Colorado

VSPC locations	Flag	VSPC	Ballot Drop Box
Douglas County Kirk Hall	1	Phase 1	
Northridge Recreation Center	2	Phase 1	
Douglas County Parks & Trails	3	Phase 1	Walk Up
Parker Library	4	Phase 1	
Castle Pines Library	5	Phase 2	Drive Up
The Ridge House	6	Phase 2	Drive Up
DC Human Services	7	Phase 2	
Crystal Valley Ranch Recreation center	8	Phase 2	Drive Up
Larkspur Fire Department	9	Phase 2	
Roxborough Library	10	Phase 2	
Louviers Clubhouse	11	Phase 2	
Parker Fieldhouse	12	Phase 2	
South Metro Fire - 46	13	Phase 2	
Canyons Community Church	14	Phase 3	
Castle Rock Library	15	Phase 3	
Franktown Fire - Pradera Station	16	Phase 3	
Southridge Recreation Center	17	Phase 3	
Highlands Ranch Library	18	Phase 3	
Westridge Recreation Center	19	Phase 3	
Lone Tree Library	20	Phase 3	
Parker Recreation Center	21	Phase 3	
Ballot Drop Box locations	Flag		Ballot Drop Box
Douglas County Elections Office	22		Drive Up
Douglas County Office Building	23		Walk Up
Douglas County Off-Leash Area	24		Drive Up
The Grange	25		Drive Up
Highlands Ranch Motor Vehicle	26		Drive Up
Highlands Ranch Sheriff Substation	27		Drive Up
Redstone Park Service Center	28		Walk Up
Larkspur Town Hall	29		Drive Up
Roxborough Marketplace	30		Walk Up
South Suburban Sports Complex	31		Drive Up
Sterling Ranch Civic Center	32		Drive Up
Lone Tree Motor Vehicle	33		Drive Up
Lone Tree Municipal Building	34		Drive Up
Douglas County Facilities Building	35		Walk Up
EchoPark Stadium	36		Drive Up
Parker Police Department	37		Drive Up
Parker Town Hall	38		Drive Up

Legend

VSPCs

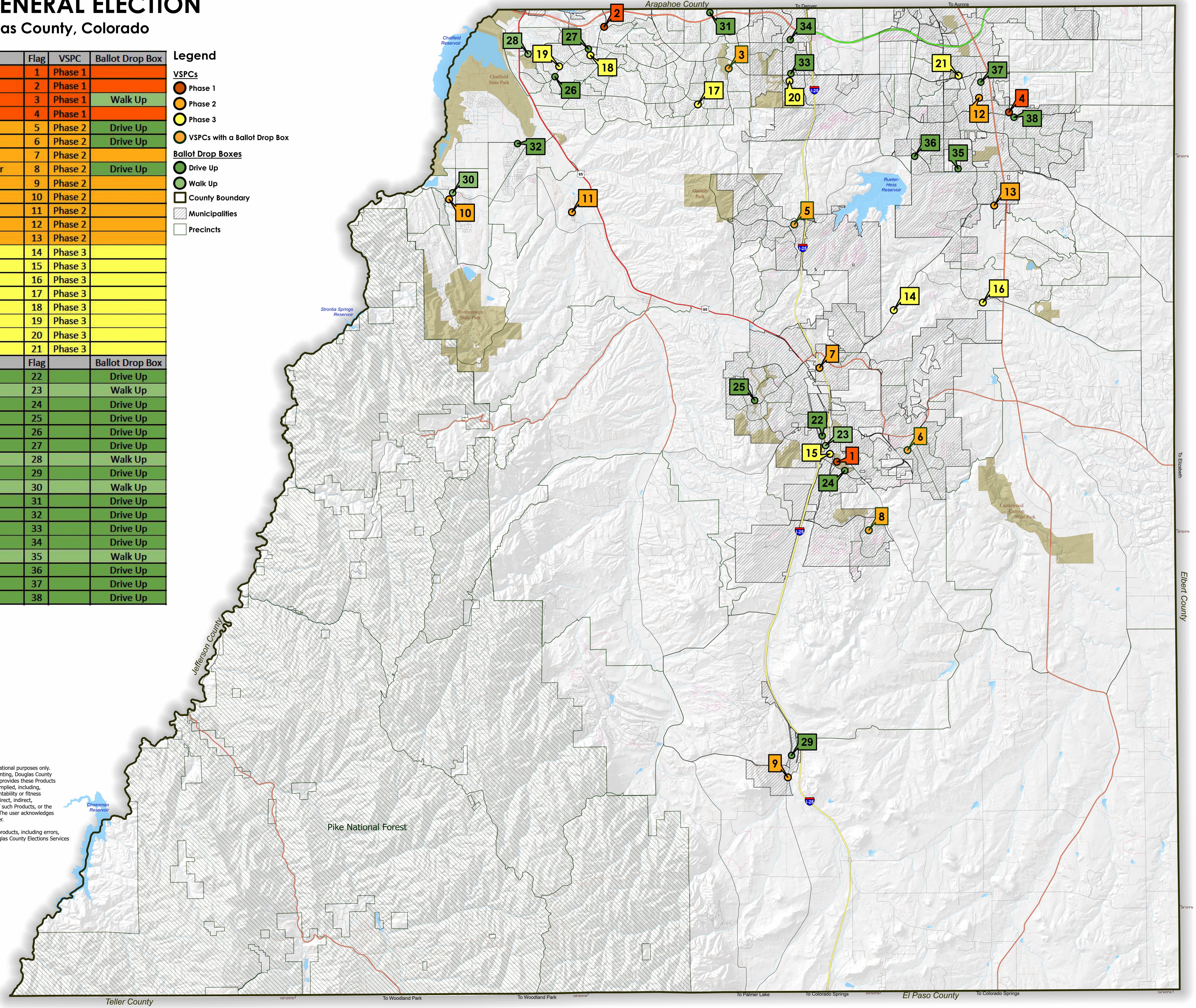
- Phase 1 (Red circle)
- Phase 2 (Orange circle)
- Phase 3 (Yellow circle)
- VSPCs with a Ballot Drop Box (Green circle)

Ballot Drop Boxes

- Drive Up (Green circle)
- Walk Up (Light Green circle)

Other

- County Boundary (Thick black line)
- Municipalities (Hatched area)
- Precincts (Thin grey lines)

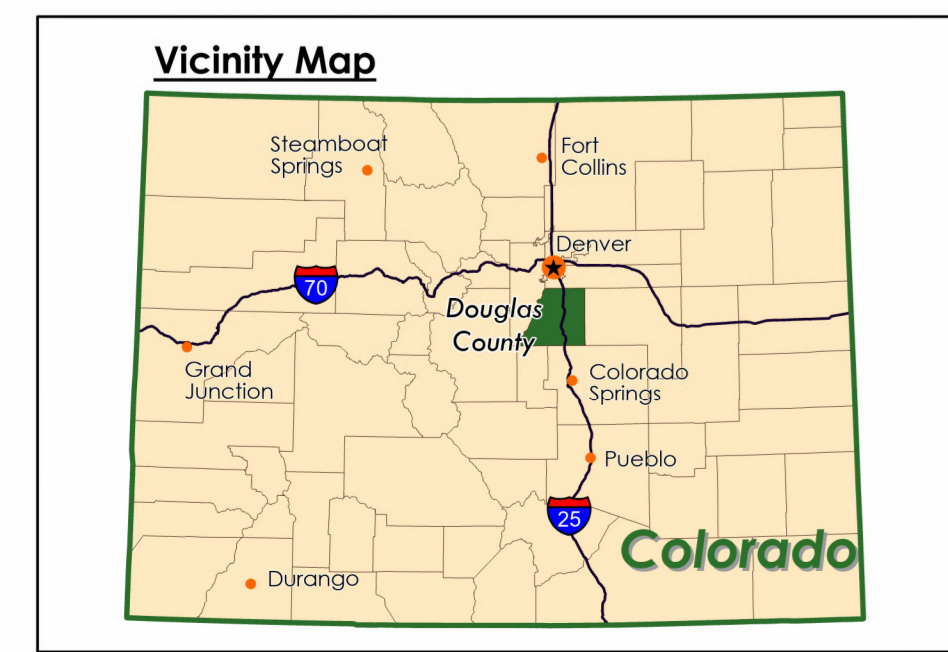


Scale in Miles

DISCLAIMER:
 All data and information ("Products") contained herein are for informational purposes only. Although such Products are believed to be accurate at the time of printing, Douglas County does not warrant that such Products are error free. Douglas County provides these Products on an "as is" basis without warranties of any kind, either express or implied, including, but not limited to, warranties of title or implied warranties of merchantability or fitness for a particular purpose. Douglas County shall not be liable for any direct, indirect, incidental, special or consequential damages arising out of the use of such Products, or the inability to use such Products or out of any breach of any warranty. The user acknowledges and agrees that the use of such Products is at the sole risk of the user.

General questions about this or any other Douglas County Elections products, including errors, omissions, corrections and/or updates should be directed to the Douglas County Elections Services at (303) 660-7444.

Douglas County Elections
 125 Stephanie Place
 Castle Rock, Colorado 80109



VSPC locations	Abbreviation	Flag	Address	City	VSPC	Ballot Drop Box
Douglas County Kirk Hall	DCKH	1	500 Fairgrounds Road	Castle Rock	Phase 1	
Northridge Recreation Center	HRNR	2	8800 S. Broadway	Highlands Ranch	Phase 1	
Douglas County Parks & Trails	DCPT	3	9651 S. Quebec Street	Highlands Ranch	Phase 1	Walk Up
Parker Library	PL	4	20105 E. Mainstreet	Parker	Phase 1	
Castle Pines Library	CPL	5	360 Village Square Lane	Castle Pines	Phase 2	Drive Up
The Ridge House	RH	6	4501 Enderud Boulevard	Castle Rock	Phase 2	Drive Up
DC Human Services	DCH	7	4400 Castleton Court	Castle Rock	Phase 2	
Crystal Valley Ranch Recreation center	CVR	8	2160 Fox Haven Drive	Castle Rock	Phase 2	Drive Up
Larkspur Fire Department	LFD	9	9414 Spruce Mountain Road	Larkspur	Phase 2	
Roxborough Library	RXL	10	8357 N. Rampart Range Road	Larkspur	Phase 2	
Louviers Clubhouse	LVC	11	7885 Louviers Boulevard	Louviers	Phase 2	
Parker Fieldhouse	PFH	12	18700 Plaza Drive	Parker	Phase 2	
South Metro Fire - 46	SMF	13	19310 Stroh Road	Parker	Phase 2	
Canyons Community Church	CCC	14	4825 Crowfoot Valley Road	Castle Rock	Phase 3	
Castle Rock Library	CRL	15	100 S. Wilcox Street	Castle Rock	Phase 3	
Franktown Fire - Pradera Station	FFD	16	6120 Bridle Path Lane	Parker	Phase 3	
Southridge Recreation Center	HRSR	17	4800 McArthur Ranch Road	Highlands Ranch	Phase 3	
Highlands Ranch Library	HRL	18	9292 S. Ridgeline Boulevard	Highlands Ranch	Phase 3	
Westridge Recreation Center	HRWR	19	9650 Foothills Canyon Boulevard	Littleton	Phase 3	
Lone Tree Library	LTL	20	10055 Library Way	Lone Tree	Phase 3	
Parker Recreation Center	PRC	21	17301 Lincoln Avenue	Parker	Phase 3	
Ballot Drop Box locations	Abbreviation	Flag	Address	City		Ballot Drop Box
Douglas County Elections Office	DCE	22	125 Stephanie Place	Castle Rock		Drive Up
Douglas County Office Building	DCO	23	100 Third Street	Castle Rock		Walk Up
Douglas County Off-Leash Area	DCOL	24	1100 Plum Creek Parkway	Castle Rock		Drive Up
The Grange	GR	25	3692 Meadows Boulivard	Castle Rock		Drive Up
Highlands Ranch Motor Vehicle	HRMV	26	2223 Wildcat Reserve Parkway	Highlands Ranch		Drive Up
Highlands Ranch Sheriff Substation	HRSS	27	9250 Zotos Drive	Highlands Ranch		Drive Up
Redstone Park Service Center	RP	28	3280 Redstone Park Circle	Highlands Ranch		Walk Up
Larkspur Town Hall	LTH	29	8720 Spruce Mountain Road	Larkspur		Drive Up
Roxborough Marketplace	RXM	30	8357 N. Rampart Range Road	Littleton		Walk Up
South Suburban Sports Complex	SSSC	31	4810 E. County Line Road	Littleton		Drive Up
Sterling Ranch Civic Center	SR	32	8155 Piney River Avenue	Littleton		Drive Up
Lone Tree Motor Vehicle	LTMV	33	9350 Heritage Hills Circle	Lone Tree		Drive Up
Lone Tree Municipal Building	LTM	34	9220 Kimmer Drive	Lone Tree		Drive Up
Douglas County Facilities Building	DCF	35	9040 Tammy Lane	Parker		Walk Up
EchoPark Stadium	EPS	36	11901 Newlin Gulch Boulevard	Parker		Drive Up
Parker Police Department	PPD	37	18600 Lincoln Meadows Parkway	Parker		Drive Up
Parker Town Hall	PTH	38	20120 E. Mainstreet	Parker		Drive Up