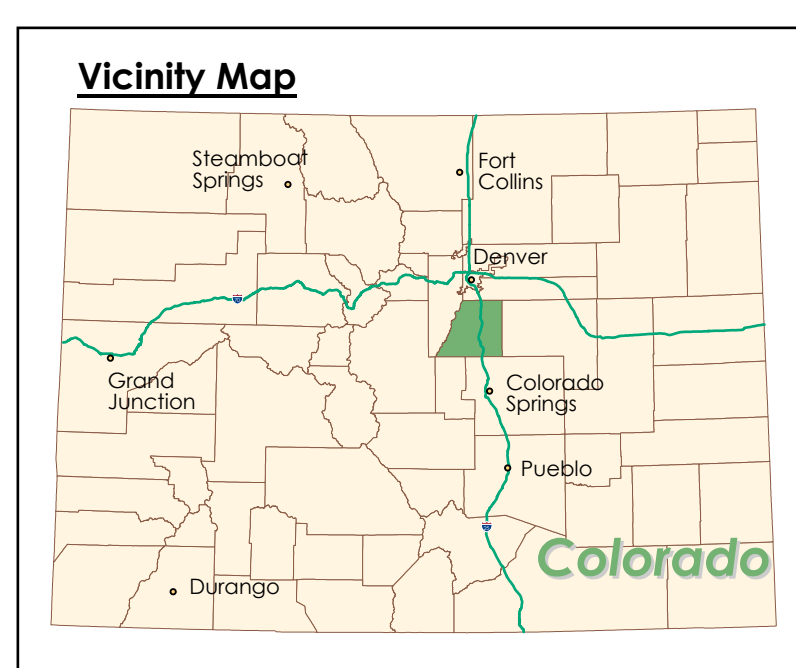
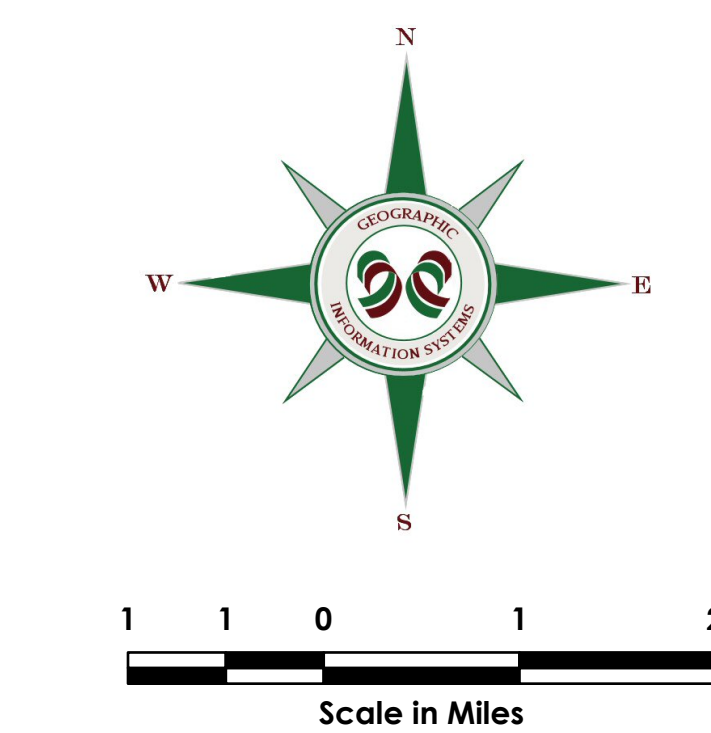


DEVELOPMENT REFERENCE MAP

Douglas County, Colorado

as of December 31, 2021

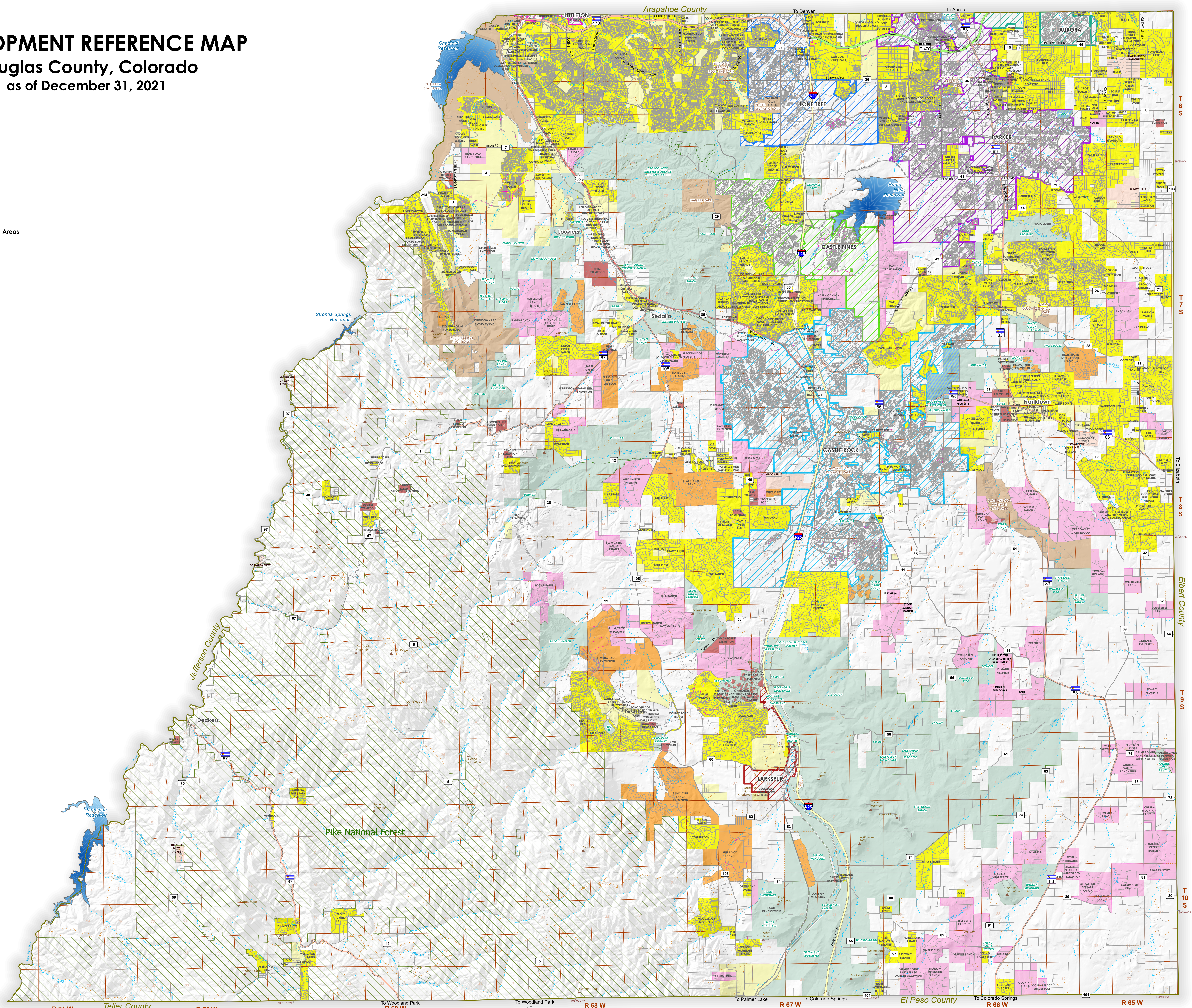
- Legend**
- Subdivisions
 - 35 Acre Developments
 - Exemptions
 - Rural Site Plans
 - Divisions without Subdivision Process
 - Other Zoning not Subdivided
 - Land Zoned Agricultural One
 - County Open Space Within Incorporated Areas
 - Open Space
 - Parks
 - Pike National Forest
 - AURORA
 - CASTLE PINES
 - CASTLE ROCK
 - LARKSPUR
 - LITTLETON
 - LONE TREE
 - PARKER
 - Parcels
 - Sections
 - Townships
 - County Boundary
 - Lakes
 - Streams
 - Peaks
 - Roads**
 - Interstate
 - US Highway
 - State Highway
 - Toll Highway
 - Major Road
 - Local Road
 - Private
 - Forest Road
 - Platted Not Built
 - Gated Community
 - Access Easement
 - Entrance/Exit Ramp



DISCLAIMER: All data and information ("Products") contained herein are for informational purposes only. Although such Products are believed to be accurate as of the date of printing, Douglas County does not warrant that such Products are error free. Douglas County provides these Products on an "as is" basis without warranties of any kind, express or implied, including but not limited to, warranties of title or implied warranties of merchantability or fitness for a particular purpose. Douglas County shall not be liable for any direct, indirect, incidental, special or consequential damages arising out of the use of such Products, or the inability to use such Products or out of any breach of any warranty. The user acknowledges and agrees that the use of such Products is at the sole risk of the user.

General questions about this or any other Douglas County GIS products, including errors, omissions, corrections and/or updates should be directed to the Douglas County GIS Services at (303) 660-7416.

Douglas County GIS Services
 1600 W. 20th Street
 Castle Rock, Colorado 80104



R 71 W Teller County R 70 W R 69 W To Woodland Park R 68 W To Woodland Park R 67 W To Palmer Lake R 66 W To Colorado Springs El Paso County To Colorado Springs R 65 W

T 6 S
T 7 S
T 8 S
T 9 S
T 10 S