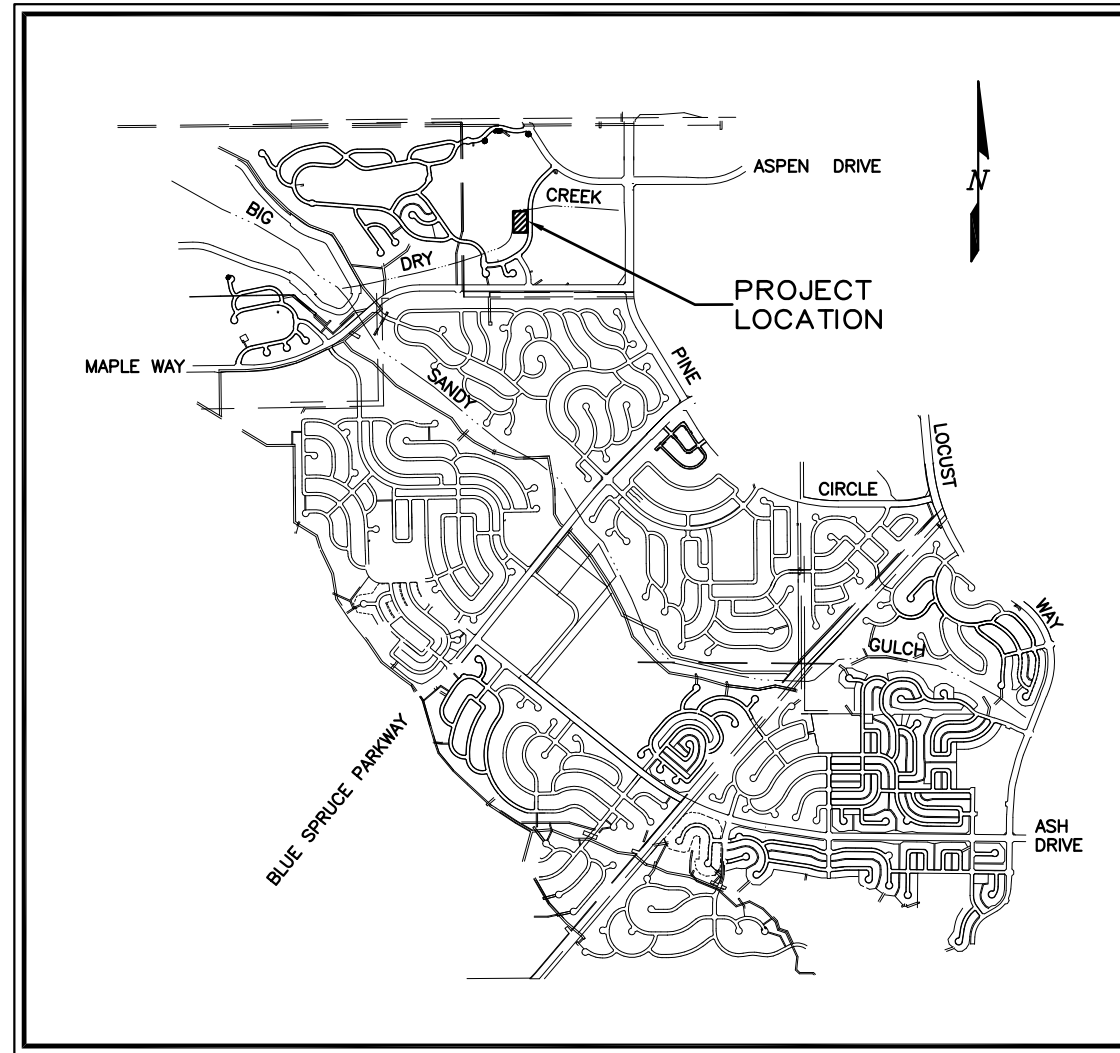


CONTRACT DRAWINGS FOR CONSTRUCTION OF
BUSINESS SITE A
GRADING, EROSION AND SEDIMENT CONTROL PLAN

EXAMPLE
 DOUGLAS COUNTY
 SMALL SITE GESC DRAWINGS



PROJECT LOCATION: SOUTHWEST QUARTER OF SECTION 9
 TOWNSHIP 6S, RANGE 68W

LOCATION MAP

SCALE 1"=1500'

THE GRADING, EROSION AND SEDIMENT CONTROL PLAN INCLUDED HEREIN HAS BEEN PLACED IN THE DOUGLAS COUNTY FILE FOR THIS PROJECT AND APPEARS TO FULFILL APPLICABLE DOUGLAS COUNTY GRADING, EROSION AND SEDIMENT CONTROL CRITERIA. ADDITIONAL GRADING, EROSION AND SEDIMENT CONTROL MEASURES MAY BE REQUIRED OF THE OWNER OR HIS OR HER AGENTS DUE TO UNFORESEEN EROSION PROBLEMS OR IF THE SUBMITTED PLAN DOES NOT FUNCTION AS INTENDED. THE REQUIREMENTS OF THIS PLAN SHALL RUN WITH THE LAND AND SHALL BE THE OBLIGATION OF THE LANDOWNER, OR HIS OR HER DESIGNATED REPRESENTATIVE, UNTIL SUCH TIME AS THE PLAN IS PROPERLY COMPLETED, MODIFIED OR VOIDED.

THE GRADING, EROSION AND SEDIMENT CONTROL PLAN INCLUDED HEREIN HAS BEEN PREPARED UNDER MY DIRECT SUPERVISION IN ACCORDANCE WITH THE REQUIREMENTS OF THE GRADING, EROSION, AND SEDIMENT CONTROL (GESC) MANUAL OF DOUGLAS COUNTY.

GESC PLANS PREPARED BY:

 AUSTIN ENGINEERING COMPANY INC. DATE PE NUMBER

THE CONSTRUCTION PLANS INCLUDED HEREIN WERE PREPARED UNDER MY DIRECT SUPERVISION IN ACCORDANCE WITH THE REQUIREMENTS OF THE ROADWAY DESIGN AND CONSTRUCTION STANDARDS AND THE STORM DRAINAGE DESIGN AND TECHNICAL CRITERIA OF DOUGLAS COUNTY.

CONSTRUCTION PLANS PREPARED BY:

 AUSTIN ENGINEERING COMPANY INC. DATE PE NUMBER

**CALL UTILITY NOTIFICATION
 CENTER OF COLORADO**
1-800-922-1987
 CALL 2-BUSINESS DAYS IN ADVANCE
 BEFORE YOU DIG, GRADE, OR EXCAVATE
 FOR THE MARKING OF UNDERGROUND
 MEMBER UTILITIES.

LIST OF DRAWINGS		
SHEET	DRAWING NO	TITLE
GENERAL DRAWINGS		
1	G-1	COVER SHEET
GESC DRAWINGS		
2	E-1	SMALL SITE GESC PLAN
GESC STANDARD NOTES AND DETAILS		
3	SHEET 1	GESC GENERAL NOTES AND LEGEND
4 - 15	SHEETS 2 - 13	GESC DETAILS AND INSTALLATION AND MAINTENANCE NOTES
16	SHEETS 14	ROCK AND RIPRAP GRADATIONS

 ASSISTANT DIRECTOR OF DEVELOPMENT REVIEW

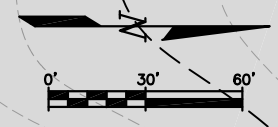
DATE

THESE CONSTRUCTION DRAWINGS HAVE BEEN REVIEWED BY DOUGLAS COUNTY FOR GRADING, EROSION AND SEDIMENT CONTROL IMPROVEMENTS ONLY.

ENGINEERING DIVISION ACCEPTANCE BLOCK

<input type="checkbox"/> <input type="checkbox"/> <input type="checkbox"/> <input type="checkbox"/>	Sheet Revisions	AUSTIN ENGINEERING CO., INC. CONSULTING ENGINEERS 88 PLAZA DRIVE, SUITE 200 HIGHLANDS RANCH, COLORADO 80126 (303) 324-4897 FAX: (303) 324-4991	JAMESTOWN DEVELOPMENT CO., INC. 7901 GRANT STREET DENVER, COLORADO 80229 (303) 287-1722 FAX: (303) 289-1084	BUSINESS SITE A	COVER SHEET	DRAWING G-1

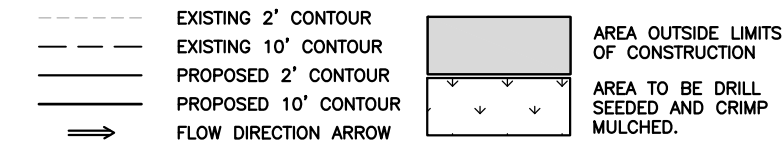
**CALL UTILITY NOTIFICATION
CENTER OF COLORADO**
1-800-922-1987
CALL 2-BUSINESS DAYS IN ADVANCE
BEFORE YOU DIG, GRADE, OR EXCAVATE
FOR THE MARKING OF UNDERGROUND
MEMBER UTILITIES.



EARTHWORK QUANTITIES:
1,500 C.Y. CUT
1,500 C.Y. FILL
0 C.Y. NET BALANCE

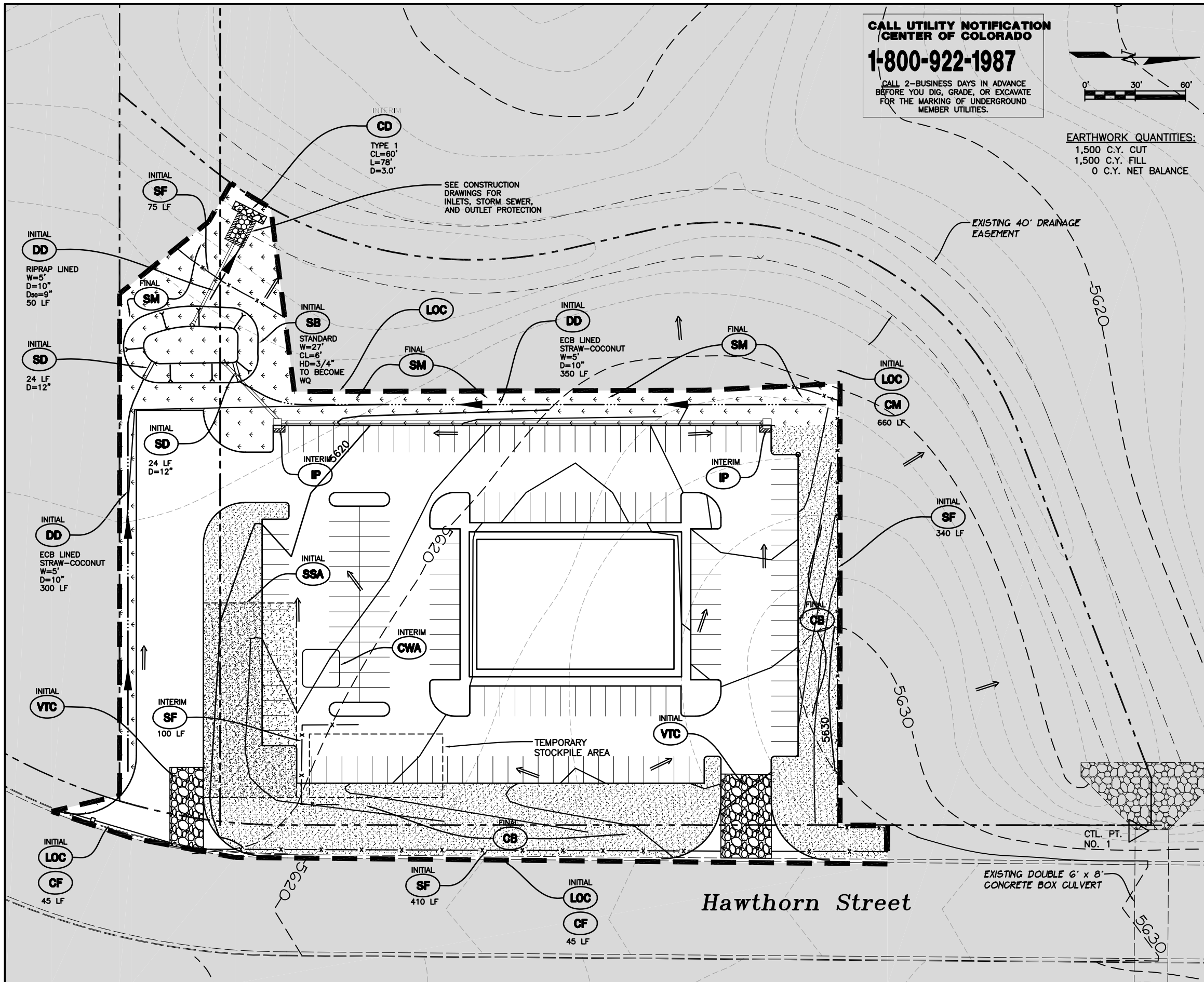
BMP LEGEND

- CD** CHECK DAM
- CB** COMPOST BLANKET
- CFB** COMPOST FILTER BERM
- CWA** CONCRETE WASHOUT AREA
- CF** CONSTRUCTION FENCE
- CM** CONSTRUCTION MARKER
- DW** DEWATERING
- DD** DIVERSION DITCH
- ECB** EROSION CONTROL BLANKET
- IP** INLET PROTECTION
- RCD** REINFORCED CHECK DAM
- RRB** REINFORCED ROCK BERM
- RRC** RRB FOR CULVERT PROTECTION
- SB** SEDIMENT BASIN
- SCL** SEDIMENT CONTROL LOG
- ST** SEDIMENT TRAP
- SM** SEEDING AND MULCHING
- SF** SILT FENCE
- SSA** STABILIZED STAGING AREA
- SR** SURFACE ROUGHENING
- TSD** TEMPORARY SLOPE DRAIN
- TSC** TEMPORARY STREAM CROSSING
- TER** TERRACING
- VTC** VEHICLE TRACKING CONTROL
- WW** VTC WITH WHEEL WASH
- ROCK AND RIPRAP GRADATIONS**
- LOC** LIMITS OF CONSTRUCTION



NOTES:
1.) SEE COVER SHEET OF DOUGLAS COUNTY STANDARD NOTES AND DETAILS (SHEET 1 OF 14) FOR LEGEND OF BMP NAMES AND SYMBOLS.
2.) CONTROL POINT NO. 1: 3" BRASS CAP ON SOUTH CORNER OF WEST HEADWALL, USGS ELEVATION 5628.23.
3.) SEE CONSTRUCTION PLANS FOR DETAILS OF PERMANENT DRAINAGE FACILITIES SUCH AS DETENTION FACILITIES, CULVERTS, STORM DRAINAGE AND INLET AND OUTLET PROTECTION.

ASSISTANT DIRECTOR OF DEVELOPMENT REVIEW
DATE
THESE CONSTRUCTION DRAWINGS HAVE BEEN REVIEWED BY DOUGLAS COUNTY FOR GRADING, EROSION AND SEDIMENT CONTROL IMPROVEMENTS ONLY.
ENGINEERING DIVISION ACCEPTANCE BLOCK



Sheet Revisions	

AUSTIN ENGINEERING CO., INC.
CONSULTING ENGINEERS
88 PLAZA DRIVE, SUITE 200
HIGHLANDS RANCH, COLORADO 80126
(303) 324-4897
FAX: (303) 324-4991

JAMESTOWN DEVELOPMENT CO., INC.
7901 GRANT STREET
DENVER, COLORADO 80229
(303) 287-1722
FAX: (303) 289-1084

BUSINESS SITE A

**SMALL SITE
GESC PLAN**

DRAWING
E-1

DOUGLAS COUNTY STANDARD GESc NOTES AND DETAILS TO GO HERE

Sheet Revisions	
000	
000	
000	

NOTE: SCALES SHOWN ARE FOR 22"x34" SHEETS; ADJUST ACCORDINGLY FOR 11"x17" SHEETS.



GESc GRADING, EROSION, AND SEDIMENT CONTROL

**GESc PLAN
STANDARD NOTES
AND DETAILS**

**SHEET
1 OF 3**