








# Land Cover Analysis Map - B.6

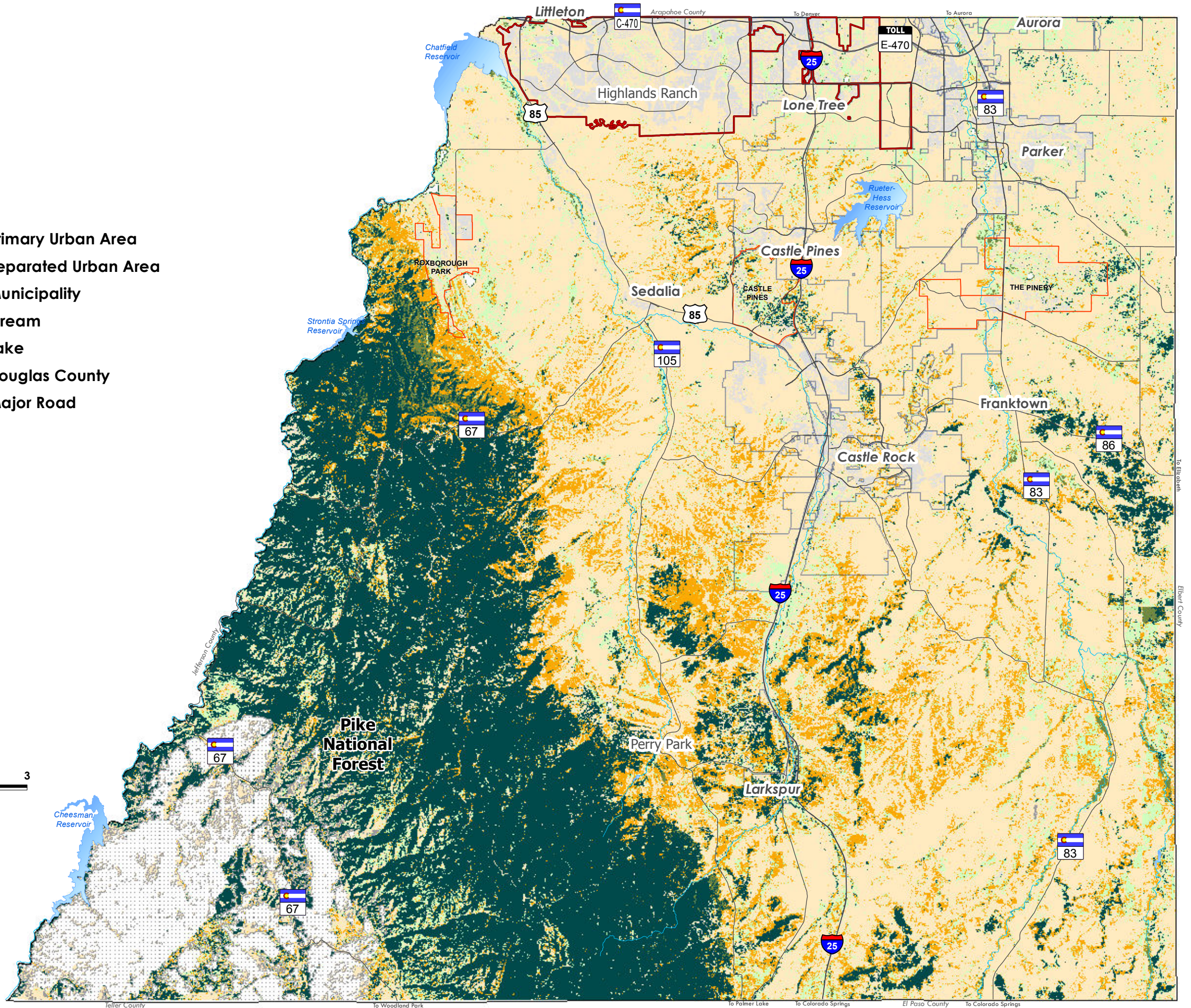
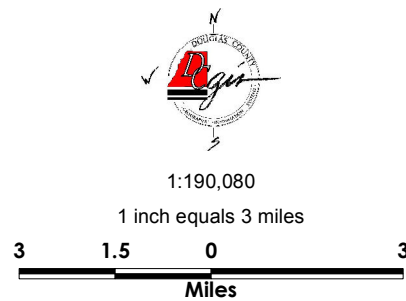
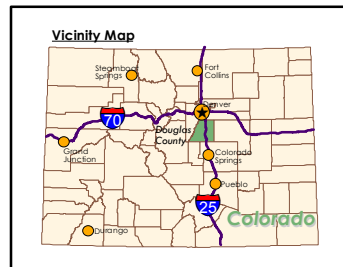
## 2030 Parks, Trails and Open Space Master Plan

November 5, 2012

### Vegetation

-  Agriculture
-  Gambel Oak
-  Hayman/Schoonover burn area
-  Herbaceous Range
-  Mixed Pine
-  Riparian
-  Urban/built-up

-  Primary Urban Area
-  Separated Urban Area
-  Municipality
-  Stream
-  Lake
-  Douglas County
-  Major Road



2030 PARKS,  
TRAILS, AND  
OPEN SPACE  
MASTER PLAN



A SUB-ELEMENT OF THE COMPREHENSIVE MASTER PLAN