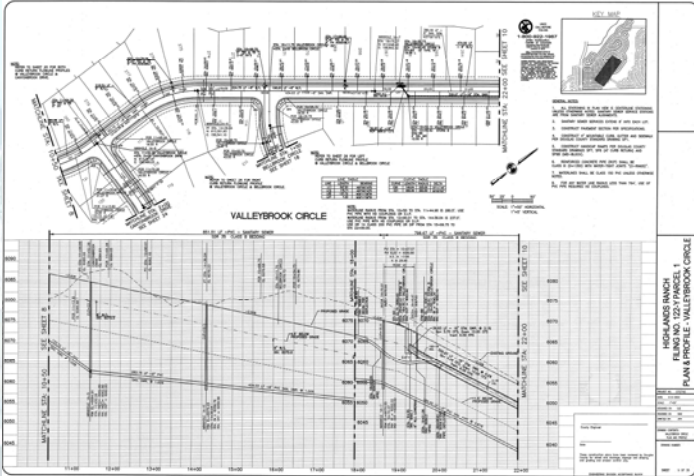


ROADWAY DESIGN AND CONSTRUCTION STANDARDS



Adopted: 1990
Amended: 1994
2003
2011
2013

ROADWAY DESIGN AND CONSTRUCTION STANDARDS

**ORIGINALLY ADOPTED IN 1990
Resolution No. R-990-046**

OFFICIALLY AMENDED IN 1994

**OFFICIALLY AMENDED IN 2003
Resolution No. R-003-092**
(Minor Changes concern Traffic Signal Specifications and
Signage and Striping Supplement)

**OFFICIALLY AMENDED IN 2011
Resolution No. R-011-073**
(Adoption of new Rural Local Roadway Design
and Technical Criteria)

**OFFICIALLY AMENDED IN 2013
Motion No. M-013-047**
(Major revisions to Chapters 1, 2, 3, 4, 7, 11, 13, 14, 15, 16
and Appendix A)

DOUGLAS COUNTY, COLORADO
ACKNOWLEDGEMENTS

**THE BOARD OF COUNTY COMMISSIONERS OF THE
COUNTY OF DOUGLAS, COLORADO**

Jack Hilbert
Roger Partridge
Jill Repella

PUBLIC WORKS ENGINEERING DIRECTOR
Frederick H. Koch, P.E.

PREPARED BY
Department of Public Works Engineering
Engineering Division

TABLE OF CONTENTS

<u>CHAPTER</u>	<u>SECTION</u>	<u>TITLE</u>	<u>PAGE</u>
1		General Provision	
	1.1	SHORT TITLE	1-1
	1.2	ENACTMENT AUTHORITY	1-1
	1.3	JURISDICTION	1-1
	1.4	PURPOSE	1-1
	1.5	AMENDMENT AND REVISIONS	1-1
	1.6	ENFORCEMENT RESPONSIBILITY	1-2
	1.7	REVIEW AND ACCEPTANCE	1-2
	1.8	INTERPRETATION	1-2
	1.9	VARIANCES	1-2
	1.10	ABBREVIATIONS	1-2
2		Submittal Procedures	
	2.1	DRAWING AND SPECIFICATIONS SUBMITTAL PROCEDURE	2-1
		2.1.1 Procedures and Requirements	2-1
		2.1.2 Presubmittal Meetings	2-1
		2.1.3 Construction Documents	2-1
		2.1.4 Engineering Review Objective	2-1
		2.1.5 Results of Engineering Review	2-1
		2.1.6 Revision of Engineering Plans and Reports	2-2
	2.2	REVISIONS TO ACCEPTED PLANS	2-2
		2.2.1 Acceptance Period	2-2
		2.2.2 Updates and Revisions	2-3
	2.3	SUBMITTAL CHECKLIST	2-3
	2.4	DRAFTING STANDARDS	2-4
3		Submittal Requirements for Construction Documents	
	3.1	GENERAL	3-1
	3.2	COVER SHEET	3-1
		3.2.1 Vicinity Map	3-1
		3.2.2 Sheet Index	3-1
		3.2.3 Standard Notes	3-1
		3.2.4 Acceptance Block	3-4
		3.2.5 Engineering Certification Note	3-7
		3.2.6 Title Block	3-8
		3.2.7 Project Title	3-8
		3.2.8 Contacts For Project	3-8
		3.2.9 Benchmark And Basis Of Bearing	3-8
		3.2.10 Overall Key Map	3-8
	3.3	REQUIREMENTS FOR CONSTRUCTION PLANS	3-9
		3.3.1 Scale	3-9
		3.3.2 North Arrow	3-9
		3.3.3 Stationing	3-10
		3.3.4 Date Of Plan	3-10
		3.3.5 Seal And Signature	3-10
		3.3.6 Utilities	3-10
		3.3.7 Key Map	3-10

TABLE OF CONTENTS

<u>CHAPTER</u>	<u>SECTION</u>	<u>TITLE</u>	<u>PAGE</u>
	3.4	REQUIREMENTS FOR STREET PLANS	3-11
	3.4.1	Plan View	3-11
	3.4.2	Profile	3-12
	3.5	REQUIREMENTS FOR DRAINAGE AND STORMWATER MANAGEMENT FACILITY PLANS	3-13
	3.5.1	Storm Sewer And Culverts	3-13
	3.5.2	Open Channels And Channel Stabilization	3-14
	3.5.3	Detention/Storage Facilities	3-15
	3.5.4	Water Quality Facilities not associated with Detention/Storage Facilities	3-15
	3.6	REQUIREMENTS FOR GRADING, EROSION AND SEDIMENT CONTROL (GESC) PLAN	3-16
	3.7	REQUIREMENTS FOR SIGNAGE AND STRIPING PLANS	3-16
	3.7.1	Submittal	3-16
	3.7.2	Review Process	3-16
	3.7.3	General Provisions	3-16
	3.7.4	The Signage Plan should:	3-17
	3.7.5	The Striping Plan must show:	3-17
	3.7.6	Douglas County Signing and Striping Supplement Plan Sheets	3-17
	3.8	REQUIREMENTS FOR TRAFFIC SIGNAL PLANS	3-17
	3.8.1	Submittal	3-17
	3.8.2	Review Process	3-18
	3.8.3	General Provisions	3-18
	3.8.4	Pole and Mast Arm loading	3-18
	3.8.5	The Traffic Signal Plan shall:	3-18
	3.8.6	Traffic Signal Details and Notes	3-19
	3.9	REQUIREMENTS FOR LANDSCAPING PLANS WITHIN COUNTY ROW OR OTHER COUNTY PROPERTIES OR EASEMENTS	3-19
	3.9.1	Guidelines	3-19
	3.9.2	Plans	3-20
	3.9.3	Landscape Notes	3-20
	3.10	REQUIREMENTS FOR CONSTRUCTION PLANS FOR MULTI-FAMILY SITE IMPROVEMENT PLANS	3-21
	3.11	REQUIREMENTS FOR CONSTRUCTION PLANS FOR NON-RESIDENTIAL SITE PLANS	3-22
	3.12	REQUIREMENTS FOR CONSTRUCTION PLANS FOR SINGLE FAMILY RESIDENTIAL DEVELOPMENT	3-22
	3.13	REQUIREMENTS FOR OVERALL UTILITY PLAN	3-22
	3.14	REQUIREMENTS FOR UTILITY CONSTRUCTION PLANS	3-23
	3.14.1	Utility Plan Sheets	3-23
	3.15	REQUIREMENTS FOR DETAIL SHEETS	3-23
	3.16	REQUIREMENTS FOR ROADWAY CONSTRUCTION PLANS FOR 35-ACRE LAND SURVEY PLATS	3-23
	3.17	RANGE POINTS - PROPERTY MONUMENTS -	3-24

TABLE OF CONTENTS

<u>CHAPTER</u>	<u>SECTION</u>	<u>TITLE</u>	<u>PAGE</u>
		BENCHMARKS	
	3.18	VARIANCES AND APPEALS	3-24
		3.18.1 General	3-24
		3.18.2 Appeal of Variance Denial	3-25
	3.19	ALTERNATE ROADWAY STANDARDS	3-25
4		Roadway Design and Technical Criteria	
	4.1	GENERAL	4-1
	4.2	ROADWAY DESIGN AND TECHNICAL CRITERIA	4-1
	4.3	ENGINEERING DESIGN & TECHNICAL CRITERIA	4-6
		4.3.1 Cul-De-Sac	4-6
		4.3.2 Urban Local (Type I)	4-9
		4.3.3 Urban Local (Type II)	4-11
		4.3.4 Entry Street	4-13
		4.3.5 Commercial And Industrial	4-17
		4.3.6 Urban Collector	4-19
		4.3.7 Minor Arterial	4-21
		4.3.8 Major Arterial (4-Lane And 6-Lane)	4-24
		4.3.9 Rural Local (Type I)	4-28
		4.3.10 Rural Local (Type II)	4-30
		4.3.11 Rural Local (Type III)	4-32
		4.3.12 Rural Local (Type IV)	4-35
		4.3.13 Rural Collector	4-37
		4.3.14 Rural Arterial (2 Lane And 4 Lane)	4-39
		4.3.15 35-Acre Private Rural Road	4-43
	4.4	SIDEWALKS, TRAILS & CURB RAMPS	4-48
	4.5	CURB CUTS & DRIVEWAYS	4-48
	4.6	DRAINAGE	4-48
		4.6.1 Crosspans	4-48
		4.6.2 Inlets	4-49
		4.6.3 Sidewalk Chases	4-50
		4.6.4 Trench Drains	4-50
		4.6.5 Rural Roadside Ditches	4-51
		4.6.6 Temporary Erosion and Sediment Control	4-51
	4.7	HORIZONTAL ALIGNMENT	4-51
		4.7.1 General	4-51
		4.7.2 Horizontal Curves	4-52
		4.7.3 Intersection Curb Return Radii	4-52
		4.7.4 Design Speed	4-52
		4.7.5 Superelevation	4-52
		4.7.6 Railroad Crossings	4-52
	4.8	VERTICAL ALIGNMENT	4-52
		4.8.1 Permissible Roadway Grades(<i>See also "Sight Distance on Vertical Curves"</i>)	4-52
		4.8.2 Permissible Intersection Grades	4-55
		4.8.3 Cross Slope	4-58
		4.8.4 Grade Breaks and Vertical Curves	4-58
	4.9	INTERSECTIONS	4-59

TABLE OF CONTENTS

<u>CHAPTER</u>	<u>SECTION</u>	<u>TITLE</u>	<u>PAGE</u>
	4.9.1	Curb Returns	4-62
	4.9.2	Connection with Existing Roadways	4-63
	4.9.3	Intersection Warping	4-63
	4.10	ROUNDABOUTS	4-63
	4.10.1	General Guidelines	4-63
	4.10.2	Feasibility Analysis	4-64
	4.10.3	Design	4-64
	4.11	SIGHT DISTANCE	4-65
	4.11.1	Sight Distance on Horizontal Curves	4-65
	4.11.2	Stopping Sight Distance	4-66
	4.11.3	Passing Sight Distance	4-66
	4.11.4	Intersection and Driveway Sight Distance	4-67
	4.11.5	Sight Distance on Vertical Curves	4-69
	4.12	OFF-SITE DESIGN	4-71
	4.13	AUXILIARY LANES	4-71
	4.14	BUS PULLOUT LANES	4-71
	4.15	RAISED MEDIANS	4-72
	4.15.1	Median Islands	4-72
	4.16	RIGHT-OF-WAY MAINTENANCE	4-75
5		Pavement Design and Technical Criteria	
6		Bridges and Major Drainage Structures	
7		As-Built Drawings	
	7.1	CRITERIA	7-1
8		Roadway Inspection and Testing Procedures and Construction Guidelines	
9		Trench Backfill Compaction	
10		Permit Procedures and Bonding Requirements for Contractor	
11		Acceptance Procedures and Requirements	
	11.1	APPLICATION OF STANDARDS	11-1
	11.2	GENERAL POLICIES	11-1
	11.3	PRELIMINARY ACCEPTANCE PROCESS	11-1
	11.3.8	Terms of Maintenance Responsibility	11-2
	11.3.9	Acceptance Inspection Scheduling	11-3
	11.3.9.1	Changes to Acceptance Inspection Date	11-3
	11.3.10	Notification of Deficiencies	11-3
	11.3.11	Reinspections	11-3
	11.3.12	Granting Preliminary Acceptance	11-4
	11.3.13	Denial of Preliminary Acceptance	11-4
	11.3.14	Warranty Security	11-4

TABLE OF CONTENTS

<u>CHAPTER</u>	<u>SECTION</u>	<u>TITLE</u>	<u>PAGE</u>
	11.4	FINAL ACCEPTANCE PROCESS	11-4
	11.5	ACCEPTANCE OF ROADWAYS BY A SPECIAL DISTRICT OR OTHER QUASI-GOVERNMENTAL AGENCY TO BE ACCEPTED BY DOUGLAS COUNTY	11-5
12		Utility Locations	
13		Access Requirements and Criteria	
	13.1	GENERAL APPLICATION PROCESS	13-1
	13.2	CRITERIA FOR ACCESS ONTO ROADS WITHIN DOUGLAS COUNTY	13-1
	13.2.1	Freeways	13-1
	13.2.2	State Highways	13-1
	13.2.3	Major Arterials	13-2
		13.2.3.1 Private Access	13-2
		13.2.3.2 Public Access	13-2
	13.2.4	Minor Arterials	13-3
		13.2.4.1 Private Access	13-3
		13.2.4.2 Public Access	13-4
	13.2.5	Urban Collectors	13-4
	13.2.6	School Access Street	13-5
	13.2.7	Commercial and Industrial Street	13-5
	13.2.8	Entry Streets	13-6
	13.2.9	Local Streets	13-6
	13.3	BASIC PRINCIPLES FOR CURB OPENINGS AND DRIVEWAYS	13-8
	13.4	PRIVATE DRIVE ACCESS TO RURAL ROADWAYS	13-9
	13.5	GENERAL REQUIREMENTS	13-11
	13.5.1	Number of Driveway Openings	13-11
	13.5.2	Driveway Entrance Angle	13-11
	13.5.3	Joint Driveway Access	13-11
	13.5.4	Minimum Space Between Driveway Openings (D)	13-11
	13.5.5	Driveway Movements	13-11
	13.5.6	Change In Use Or Traffic Volume	13-11
	13.5.7	Auxiliary Lanes (Acceleration/Deceleration Lanes)	13-12
	13.6	ACCESS DESIGN	13-12
	13.6.1	Width of Driveway Opening (W)	13-12
	13.6.2	Driveway Edge Clearance (E)	13-12
	13.6.3	Corner Clearance (C)	13-12
	13.6.4	Sight Distance	13-13
	13.7	UNPERMITTED ACCESS	13-13
14		Improvement Agreements and Exhibits	
	14.1	GENERAL	14-1
	14.2	IMPROVEMENT AGREEMENTS FOR SUBDIVISIONS	14-1
	14.2.1	Subdivision Improvements Agreement (SIA)	14-1

TABLE OF CONTENTS

<u>CHAPTER</u>	<u>SECTION</u>	<u>TITLE</u>	<u>PAGE</u>
		14.2.2 Subdivision Improvements Agreement for Private Development (SIA-Private)	14-1
		14.2.3 Public Improvements Agreement (PIA)	14-1
	14.3	IMPROVEMENT AGREEMENTS FOR SITE IMPROVEMENT PLANS	14-1
	14.4	IMPROVEMENT AGREEMENTS FOR OTHER DEVELOPMENTS	14-1
	14.5	COST ESTIMATE EXHIBITS	14-2
	14.6	PHASING PLAN FOR SIA AND SIA-PRIVATE	14-2
		14.6.1 Phasing Considerations	14-3
		14.6.2 Plan Requirements	14-3
15		Private Roads	
	15.1	COUNTY REQUIREMENTS	15-1
	15.2	GENERAL APPLICATION	15-1
	15.3	PRIVATE IMPROVEMENTS	15-1
	15.4	PRIVATE ROADWAY STANDARDS	15-2
	15.5	PAVEMENT DESIGN / ROADWAY CONSTRUCTION	15-2
	15.6	COST ESTIMATE AND IMPROVEMENT AGREEMENT	15-2
	15.7	INSPECTION REQUIREMENTS	15-2
	15.8	WARRANTY REQUIREMENTS	15-3
16		Forms	
	16.1	GENERAL	16-1
	16.2	DOUGLAS COUNTY ENGINEERING DIVISION SUBMITTAL FORM	16-1
	16.3	SUBDIVISION IMPROVEMENTS AGREEMENT	16-1
	16.4	SUBDIVISION IMPROVEMENTS AGREEMENT FOR PRIVATE DEVELOPMENT	16-1
	16.5	SITE IMPROVEMENT PLAN IMPROVEMENTS AGREEMENT	16-1
	16.6	PUBLIC IMPROVEMENTS AGREEMENT	16-1
	16.7	ENGINEERING COST ESTIMATES	16-2
	16.8	GRADING, EROSION AND SEDIMENT CONTROL PERMIT APPLICATION	16-2
	16.9	LOW IMPACT GRADING, EROSION AND SEDIMENT CONTROL PERMIT APPLICATION	16-2
	16.10	FLOODPLAIN DEVELOPMENT PERMIT	16-2
	16.11	PERMANENT ACCESS PERMIT	16-2
	16.12	TEMPORARY ACCESS PERMIT	16-3
	16.13	RIGHT OF WAY USE AND/OR CONSTRUCTION PERMIT	16-3
	16.14	ASPHALT MIX DESIGN SUBMITTAL FORM	16-3
	16.15	OVERSIZE/OVERWEIGHT PERMIT	16-4
	16.16	TEMPORARY BATCH PLANT/GRADING, EROSION AND SEDIMENT CONTROL PERMIT APPLICATION	16-4
	16.17	ASSIGNMENT OF SUBDIVISION IMPROVEMENTS AGREEMENT AND DEVELOPMENT RIGHTS	16-4
	16.18	NOTICE OF CHANGE TO APPROVED DESIGN	16-4

TABLE OF CONTENTS

<u>CHAPTER</u>	<u>SECTION</u>	<u>TITLE</u>	<u>PAGE</u>
	16.19	REQUEST FOR INITIAL WARRANTY ACCEPTANCE	16-4
	16.20	REQUEST FOR FULL TERM MAINTENANCE	16-4
	16.21	REQUEST FOR INITIAL WARRANTY ACCEPTANCE OF PRIVATE IMPROVEMENTS	16-4
	16.22	REQUEST FOR FINAL RELEASE OF SECURITY FOR PRIVATE IMPROVEMENTS	16-4
	16.23	STATE HIGHWAY ACCESS PERMIT	16-4
	16.24	RETAINING WALL PERMIT	16-4

TABLE OF CONTENTS

<u>APPENDICES</u>	<u>TITLE</u>
APPENDIX A	STANDARD PLATES
APPENDIX B	GUIDELINES FOR TRAFFIC IMPACT STUDIES
APPENDIX C	GUIDELINES FOR TRAFFIC CONTROL DURING CONSTRUCTION (Document pending - contact Douglas County Permits/Inspection Office for details)
APPENDIX D	CONSTRUCTION SPECIFICATION TOLERANCES
APPENDIX E	DENVER/COLORADO/SWELL-CONSOLIDATION TEST
APPENDIX F	TRAFFIC SIGNAL SPECIFICATIONS
APPENDIX G	SIGNAGE & STRIPING SUPPLEMENT

LIST OF TABLES

<u>TABLE</u>	<u>DESCRIPTION</u>	<u>PAGE</u>
4-1	SUMMARY OF ROADWAY CONSTRUCTION STANDARDS	4-2, 4-3, 4-4, 4-5
4-2	PERMISSIBLE INTERSECTION GRADE TABLE	4-56
4-3	STOPPING AND PASSING SIGHT DISTANCE	4-67
4-4	BUS PULLOUT LANES	4-71
5.1	Subgrade Investigation and Pavement Design Checklist	5.2
5.2	Recommended Equivalent (1 8 Kip) Daily Load Applications (EDLA)	5.5
5.3	Serviceability Index	5.6
5.4	Recommended Minimum Pavement Sections	5.6
5.5	Strength Coefficients	5.7
5.6	Nomograph for Flexible Pavement Design with SI = 2.0.	5.9
5.7	Nomograph for Flexible Pavement Design with SI = 2.5	5.10
5.8	Nomograph for Rigid Pavement Design with SI = 2.0	5.12
5.9	Nomograph for Rigid Pavement Design with SI=2.5	5.13
5.10	Material Specifications for Hot Bituminous Pavement	5.16
5.11	Mix Tolerances	5.17
5.12	Mix Design Criteria	5.17
5.12a	Minimum Voids in the Mineral Aggregate (VMA), Percent	5.18
5.13	Fine Aggregates for Portland Cement Concrete	5.1 9
5.14	Coarse Aggregates for Portland Cement Concrete	5.20
5.15	Aggregate Base Course Materials	5.21
6.1	Class 1 Structural Backfill	6.2
6.2	Concrete Materials Specifications	6.4
6.3	Concrete Aggregate Gradation Table Percentages Passing Designated Sieves and Nominal Size Designation	6.5

LIST OF TABLES

<u>TABLE</u>	<u>DESCRIPTION</u>	<u>PAGE</u>
6.4	Gradation Specifications for Filter Material	6.6
6.5	Recommended Filter Class	6.7
6.6	Classification and Gradation of Ordinary Riprap	6.8
8.1	Testing Frequency	8.3
8.2	Moisture-Density Control	8.5
9.1	Gradation of Subbase Material	9.6
9.2	Gradation of Limits of Base Material	9.7
13-1	WIDTH OF DRIVEWAY OPENINGS	13-12

LIST OF FIGURES

<u>FIGURE</u>	<u>DESCRIPTION</u>	<u>PAGE</u>
3-1	ACCEPTANCE BLOCK	3-5
3-1a	ACCEPTANCE BLOCK FOR SIGNAGE AND STRIPING & TRAFFIC SIGNAL PLANS	3-6
3-1b	ACCEPTANCE BLOCK FOR 35-ACRE LAND SURVEY PLATS	3-7
3-2	TITLE BLOCK LAYOUT	3-8
3-3	OVERALL KEY MAP	3-9
3-4	KEY MAP	3-10
4-1	URBAN TURNAROUNDS	4-46
4-2	RURAL TURNAROUNDS	4-46
4-3	OFFSET TURNAROUNDS	4-47
4-4	KNUCKLES	4-47
4-5	EYEBROWS	4-47
4-6	SUMP INLET PROFILE	4-49
4-7	FLOWLINE GRADE AROUND CURVES	4-53
4-7a	FLOWLINE DESIGN AROUND KNUCKLES	4-53
4-7b	FLOWLINE DESIGN AROUND EYEBROWS	4-54
4-8	PERMISSIBLE INTERSECTION GRADE LAYOUT	4-55
4-9	PERMISSIBLE INTERSECTION GRADE EXAMPLE	4-57
4-10	CROSS SLOPE EXAMPLE	4-58
4-11	VERTICAL CURVE EXAMPLES	4-59
4-12	PERMISSIBLE INTERSECTION ANGLE	4-61
4-13	CURB RETURN EXAMPLES	4-62
4-14	LATERAL CLEARANCE TO SIGHT OBSTRUCTION INSIDE OF HORIZONTAL CURVES PROVIDING STOPPING DISTANCE FOR TURNING ROADWAYS	4-66

LIST OF FIGURES

<u>FIGURE</u>	<u>DESCRIPTION</u>	<u>PAGE</u>
4-15	INTERSECTION AND DRIVEWAY SIGHT DISTANCE (LINE-OF-SIGHT TRIANGLE)	4-68
4-16	SCALING AND RECORDING SIGHT DISTANCE ON PLANS	4-70
4-17	BUS PULLOUT LANE	4-72
4-18	MEDIAN AT INTERSECTION	4-73
4-19	INTERSECTION STRIPING OPTION FOR SINGLE LEFT TURN	4-74
4-20	INTERSECTION STRIPING OPTION FOR DUAL LEFT TURN	4-74
6.1	Gradation of Ordinary Riprap	6.9
9.1a	Trenching Detail	9.4
9.1b	Trenching Detail Notes	9.5
10.1	Letter of Responsibility	10.6
12.1	Utility Line Location General	12.4
12.2	Utility Location General	12.5
12.3	Utility Location General	12.6
13-1	INTERSECTION SEPERATION FOR ENTRY STREET AND LOCAL STREETS	13-7
13-2	MINIMUM DRIVEWAY DIMENSIONS BASED ON REQUIRED CULVERT SIZE	13-10
13-3	CURB OPENINGS AND DRIVEWAY SPACING	13-14
13-4	CORNER CLEARANCES FOR NON SINGLE FAMILY DRIVEWAYS	13-15

REFERENCES

1. Douglas County Subdivision Resolution, 2010, Douglas County Planning Division
2. A Policy on Geometric Design of Highway and Streets, 6th Revision, 2011, American Association of State Highway and Transportation Officials
3. Douglas County Storm Drainage Design and Technical Criteria, 2008, Douglas County Engineering Division
4. Standard Specifications for Road and Bridge Construction, 2011, Colorado Department of Transportation
5. Transportation Standards and Details for the Engineering Division, 2010 City and County of Denver Public Works
6. Infrastructure Design and Construction Standards, 2007, Arapahoe County Department of Public Works and Development
7. Urban Storm Drainage Criteria Manual, Vol. 1, 2 & 3, July 2001, Urban Drainage and Flood Control District
8. Manual on Uniform Traffic Control Devices for Streets and Highways, 2009 Edition, U.S Department of Transportation, Federal Highway Administration
9. Standard Specifications for Highway Bridges, 17th Edition, American Association of State Highway and Transportation Officials
10. State of Colorado State Highway Access Code, Volume 2, Code of Colorado Regulations, 601-1, 2002 Colorado Department of Transportation
11. Highway Capacity Manual, 2000, Transportation Research Board National Research Council
12. Trip Generation, 8th Edition, Institute of Transportation Engineers
13. American Society for Testing and Material
14. National Fire Protection Association NFPA -13D, 2010
15. Douglas County Grading, Erosion and Sediment Control (GESD) Manual, 2004, Douglas County Engineering Division
16. CDOT Roadway Design Guide, 2005, Colorado Department of Transportation
17. CDOT M-Standards, 2006, Colorado Department of Transportation
18. CDOT Traffic S-Standard Plans, 2006, Colorado Department of Transportation
19. Roadside Design Guide, 4th Edition, 2011, American Association of State Highway and Transportation Officials
20. Douglas County Zoning Resolution, 2010, Douglas County Planning Division

REFERENCES

21. Guidelines for Geometric Design of Very Low-Volume Local Roads (ADT<400), 2001, American Association of State Highway and Transportation Officials