

# CRT 2024

## YEAR IN REVIEW



### CLINICAL RECAP



1,368

INDIVIDUALS SERVED

2,474  
SUCCESSFUL  
ENCOUNTERS



The Community Response Team (CRT), established in 2017, by the Douglas County Mental Health Initiative, pairs a law enforcement officer with a mental health professional to help adults and youth experiencing a mental health crisis avoid the emergency room or jail and, instead, find the support they need to heal.

In 2024, the Crisis Response Team (CRT) reached several key milestones, underscoring its growth and innovation. In May, CRT Clinical Staff officially transitioned to County employees, a move that highlighted the Board of County Commissioners' (BOCC) strong commitment to the program's future.

June brought a unique opportunity for professional development and collaboration as CRT traveled to Omaha, Nebraska, to participate in the 4th Annual Co-Responder Conference presented by the International Co-Responder Alliance. Later in October, CRT shared its expertise at the Lakewood Police Department Co-Responder Symposium, delivering a presentation on the use, policies, and funding of emotional support canines in co-response. Douglas County's CRT proudly leads the way as the first co-responder program in Colorado to incorporate dedicated emotional support animals as part of its team.

The CRT program achieved full staffing this year, welcoming an exceptional team of clinicians and resource specialists. Not only were all positions filled, but the team also managed to attract some of the most talented professionals in the field, ensuring the highest level of care and service to the community.



EMERGENCY  
ROOM  
DIVERSIONS:

160

17

JAIL  
DIVERSIONS



OFFICERS  
RELIEVED BY  
CLINICIANS:

639

### RESOURCE SPECIALIST ACCOMPLISHMENTS

843 ENROLLMENTS INTO  
SERVICES SUCH AS:

- Outpatient mental health
- Partial Hospitalization
- Family therapy
- Intensive Outpatient substance use disorder recovery

50%  
REFERRALS WERE  
FOR YOUTH UNDER  
18 YEARS OLD

### NOTEWORTHY CONDUCT

Lone Tree Police Department Corporal, Grant Collins and Community Response Team Lead Clinician, Sophia Lind were recognized at this year's Police Department Awards. Their teamwork and dedication earned Corporal Collins the Police Service Award, and Sophia the Chief's Citation for Meritorious Conduct.



### EMOTIONAL SUPPORT CANINES

Buddy works for Castle Rock Police Department and Olive works for Douglas County Sheriff's office. Here Buddy, takes his job as emotional support canine very seriously while he comforts a community member being served by the CRT.



### LOOKING AHEAD TO 2025



- Funding from the Region 12 Opioid Abatement Council will allow for a data analysis to support the CRT programs efforts to open the referral process for self and community referrals.
- CRT is participating in the DCMHI Specialty Court Workgroup and building enhanced partnerships with local area hospitals to create smoother hand-offs and more comprehensive discharge planning and support.

# CARE COMPACT 2024

## YEAR IN REVIEW



The Youth Care Compact (YCC) Pilot Program officially launched in April 2024, marking an important milestone in addressing the needs of youth in Douglas County.



The Care Compact (TCC) is an enhanced care coordination program that links existing case management and care coordination service providers. It is offered through Douglas County and a network of dedicated community partners.

Contracts were executed with AllHealth to establish a Youth Care Compact community-based team comprising a case manager and a peer support specialist. Additionally, Developmental Pathways was engaged to provide dedicated case management for both adult and youth Care Compact programs.

Over the year, Care Compact staff submitted 18 Care Portal requests, resulting in support for 31 children and \$3,608 in aid provided.



The Care Compact supports individuals with mental health, substance use disorder or intellectual and developmental disability (IDD) needs. The Care Compact is specifically designed to serve adults involved in multiple systems who have complex and overlapping needs - for example someone with IDD who also has a chronic disease and mental health concerns. People who work with The Care Compact frequently have unmet basic needs, or their basic necessities are unstable.

Six months after the closure of Adult Care Compact cases, crisis response rates decreased by 87%, demonstrating the program's effectiveness in fostering stability and reducing the need for emergency interventions.

### TOP SERVICES PROVIDED:

1. Case Management; Crisis Services; Educational Support
2. Referrals/Applications Completed
3. Food Assistance
4. Mental/Behavioral Health Outpatient Services (Financial)
5. Mental/Behavioral Health Inpatient Services (Housing)

The Care Compact navigators enrolled 51 out of 64 referrals and provided 470 services.



The Youth Care Compact Pilot Program navigators enrolled nine of 13 referrals and provided 56 services, including supporting three parents.



### BUILDING CONNECTIONS, TRANSFORMING CARE: THE CARE COMPACT TEAM 2024

*Left to right:* Dianthe, Youth Care Compact (YCC) Navigator; Leandra, Care Compact Supervisor; Pam, Adult CC (TCC) Navigator

In May, the team co-presented a Health Care Policy and Financing (HCPF) Care Compact training in collaboration with Health Management Associates (HMA).

Building on this momentum, the team partnered with AllHealth to present The Care Compact: An Enhanced Care Coordination Model at the Colorado Behavioral Health Council Conference in Breckenridge in September. This presentation highlighted the innovative approaches and successes of the Care Compact, further establishing the program as a leader in enhancing care coordination across the state.

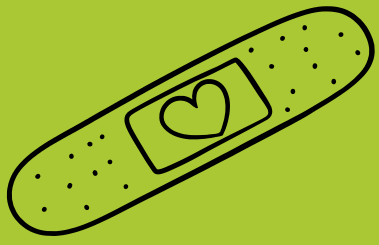
# MENTAL HEALTH INITIATIVE 2024

YEAR IN REVIEW



## Specialty Working Group

A Specialty Court Working Group was formed to develop a civil court concept tailored for the 23rd Judicial District, reflecting innovative approaches to addressing mental health within the judicial system.



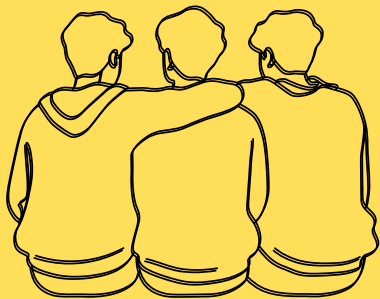
## Mental Health First Aid

The year also saw the successful launch of the Mental Health First Aid project, which provided 10 classes designed to equip community members with the skills to support individuals experiencing mental health challenges.



## ARPA Suicide Prevention

Douglas County committed over \$600,000 in American Rescue Plan Act (ARPA) funding toward suicide prevention efforts, emphasizing the county's dedication to tackling this pressing issue.



## Men's Mental Health

Additionally, the Men's Mental Health project was initiated to gain a deeper understanding of men's mental health challenges, including suicide, and to identify community-based strategies that address gaps not captured by traditional data.



## Meaningful Partnerships

The DCMHI also grew its collaborative network, with over 50 organizations actively participating in its efforts. This robust partnership continues to drive meaningful change in mental health care and support for Douglas County residents.