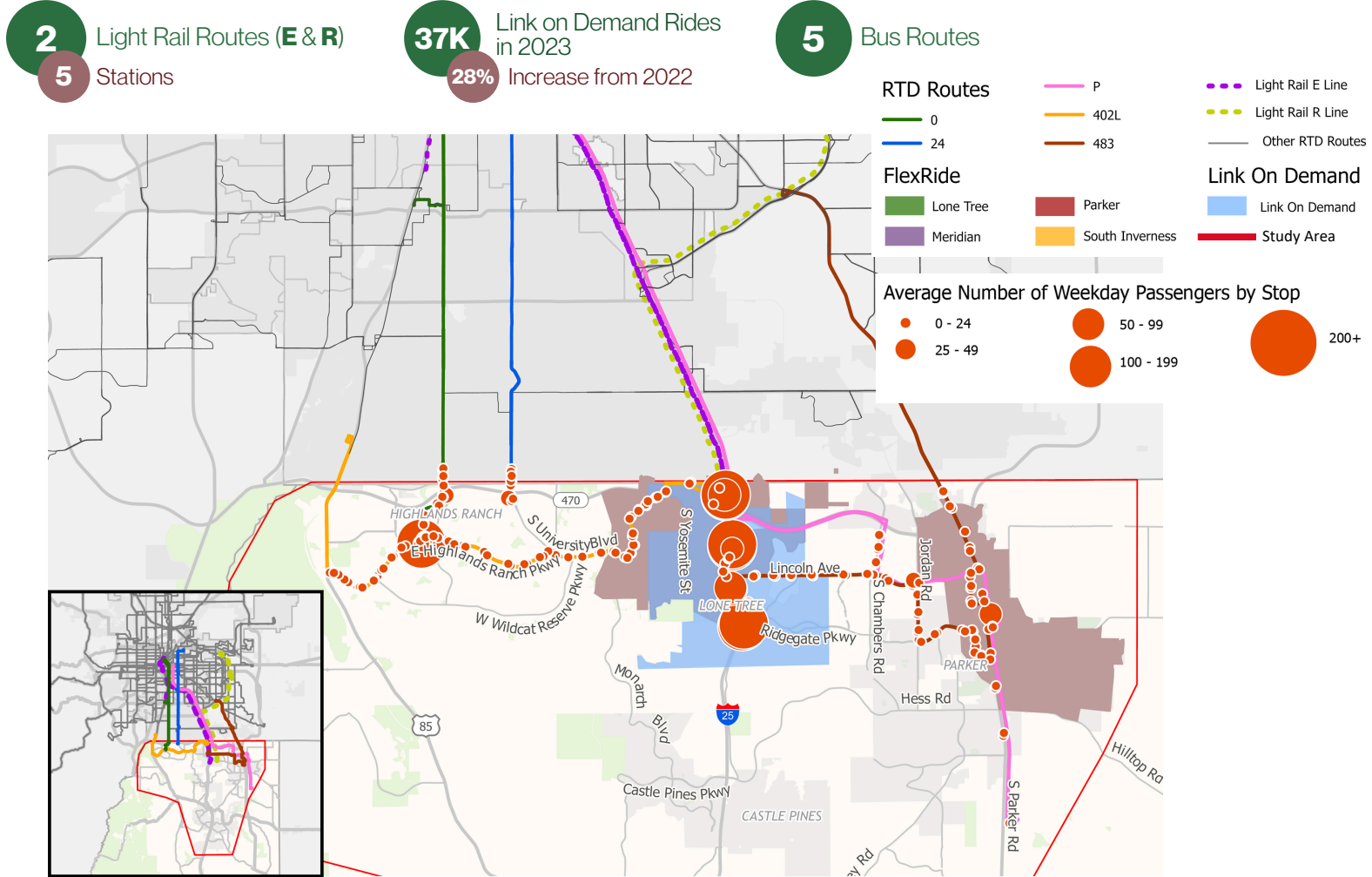


# Douglas County Integrated Transit and Multimodal Study

## Existing Conditions Fact Sheet

### Bus Routes and Stops in Study Area



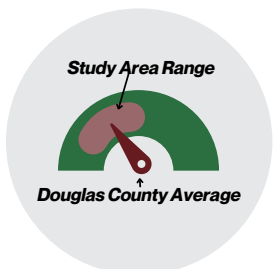
### Pedestrian and Multiuse Trails



### Bike Network



## KEY DEMOGRAPHIC FACTORS



#### Race and Ethnicity: Non-White Population



Douglas County Average **26%**  
 Study Area Range: 23-31%  
 CO Average: 34%

#### Median Household Income



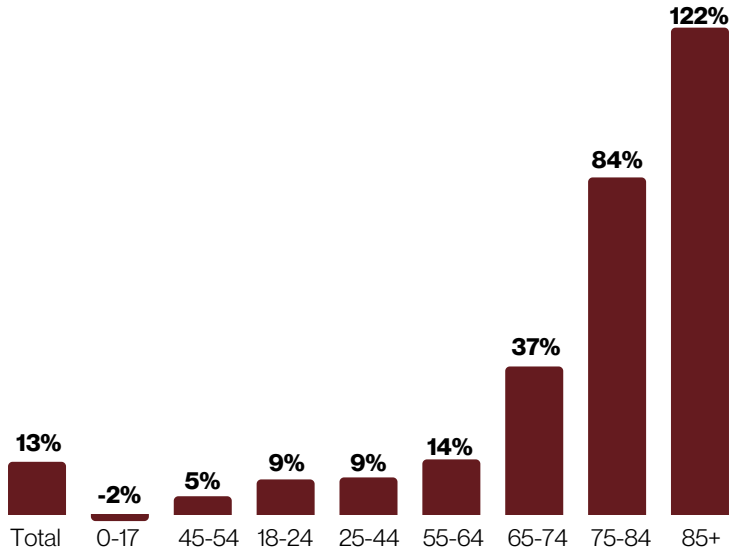
Douglas County Average **\$139K**  
 Study Area Range: \$121k-189k  
 CO Average: \$89k

#### Limited Vehicle Availability (One or No Vehicle Households)

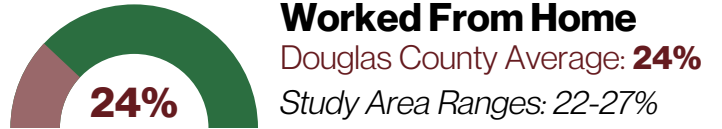
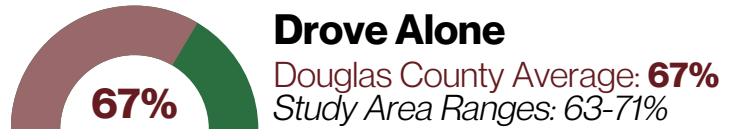


Douglas County Average **13%**  
 Study Area Range: 9-26%  
 CO Average: 20%

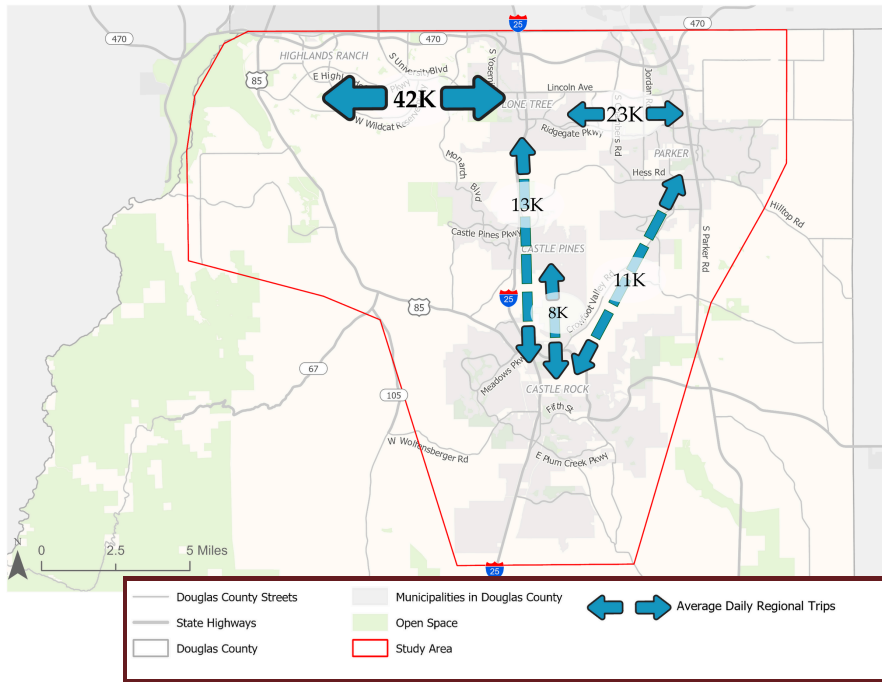
# POPULATION GROWTH: 2022-2032



# COMMUTE TO WORK

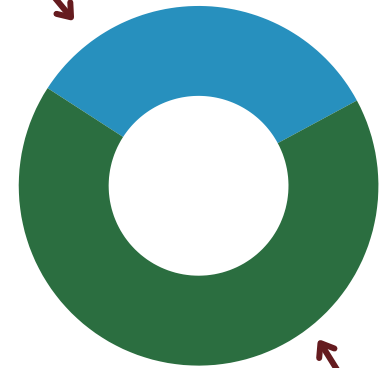


## Daily Trips Within Study Area



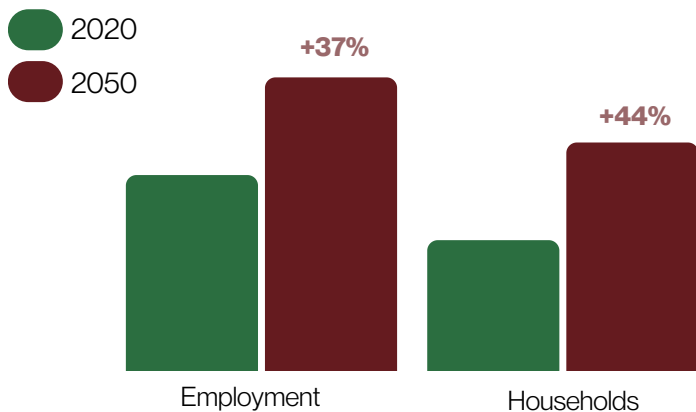
## TRAVEL PATTERNS

33% extend beyond the study area



67% of trips occur within the study area

## CHANGES IN LAND USE



## DAILY TRIPS OUTSIDE OF STUDY AREA

